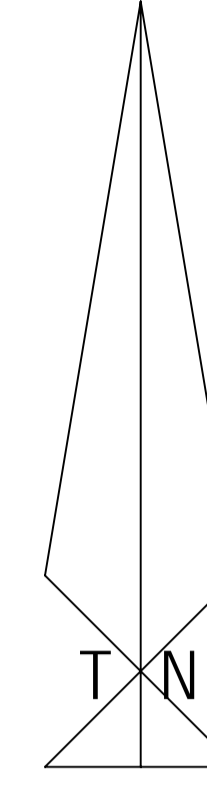


MAIN FIGURE						MAIN FIGURE							
SIDES (metres)		DIRECTIONS		System WG31* CO-ORDINATES (metres)		SIDES (metres)		DIRECTIONS		System WG31* CO-ORDINATES (metres)			
				CONSTANTS	Y	X					CONSTANTS	Y	X
				0.00	+ 3 200 000.00						0.00	+ 3 200 000.00	
A-B	27.05	330 33 30	A	-24 609.72	+56 025.46	A1-B1	12.01	170 20 10	A1	-24 689.80	+56 566.98		
B-C	18.94	11 45 10	B	-24 623.02	+56 049.02	B1-C1	7.24	126 41 20	B1	-24 687.78	+56 555.14		
C-D	33.04	2 32 30	C	-24 619.16	+56 067.56	C1-D1	15.29	170 20 00	C1	-24 681.98	+56 550.82		
D-E	26.15	345 36 40	D	-24 617.69	+56 100.57	D1-E1	20.04	83 48 40	D1	-24 679.41	+56 535.74		
E-F	11.43	327 23 40	E	-24 624.19	+56 125.90	E1-F1	29.79	80 17 10	E1	-24 659.49	+56 537.90		
F-G	12.13	311 41 40	F	-24 630.35	+56 136.52	F1-G1	13.21	55 31 10	F1	-24 630.13	+56 542.93		
G-H	100.75	298 14 00	G	-24 639.40	+56 143.59	G1-H1	27.50	80 17 00	G1	-24 619.23	+56 550.41		
H-J	23.78	289 08 30	H	-24 728.17	+56 191.25	H1-J1	160.75	170 17 10	H1	-24 592.13	+56 555.05		
J-K	23.78	282 01 30	J	-24 750.64	+56 199.05	J1-K1	16.10	189 23 10	J1	-24 565.00	+56 396.60		
K-L	49.64	278 27 50	K	-24 773.90	+56 204.01	K1-L1	28.47	177 53 20	K1	-24 567.63	+56 380.72		
L-M	21.82	32 01 50	L	-24 823.00	+56 211.31	L1-M1	22.37	173 03 00	L1	-24 566.58	+56 352.27		
M-N	54.57	9 03 20	M	-24 811.43	+56 229.81	M1-N1	10.10	247 28 50	M1	-24 563.87	+56 330.06		
N-P	39.49	358 28 30	N	-24 802.84	+56 283.70	N1-P1	20.00	170 25 50	N1	-24 573.20	+56 326.20		
P-Q	50.19	348 29 20	P	-24 803.89	+56 323.17	P1-Q1	8.17	116 04 40	P1	-24 569.87	+56 306.47		
Q-R	166.48	359 28 50	Q	-24 813.91	+56 372.35	Q1-R1	55.22	166 01 00	Q1	-24 562.54	+56 302.88		
R-S	13.50	12 48 10	R	-24 815.42	+56 538.83	R1-S1	60.19	170 18 30	R1	-24 549.19	+56 249.30		
S-T	135.22	5 31 20	S	-24 812.43	+56 552.00	S1-T1	21.07	189 26 00	S1	-24 539.06	+56 189.98		
T-U	12.53	112 52 00	T	-24 799.42	+56 686.59	T1-U1	23.24	231 57 10	T1	-24 542.51	+56 169.19		
U-V	25.03	106 47 00	U	-24 787.87	+56 681.72	U1-V1	24.89	293 32 30	U1	-24 560.82	+56 154.87		
V-W	24.97	99 39 30	V	-24 763.90	+56 674.49	V1-W1	31.97	180 02 40	V1	-24 583.64	+56 164.81		
W-X	26.21	93 12 30	W	-24 739.29	+56 670.30	W1-X1	3.22	210 57 10	W1	-24 583.66	+56 132.84		
X-Y	14.96	123 38 40	X	-24 713.12	+56 668.83	X1-Y1	21.17	185 32 10	X1	-24 585.32	+56 130.08		
Y-Z	89.29	170 20 10	Y	-24 700.66	+56 660.54	Y1-Z1	32.33	189 37 40	Y1	-24 587.36	+56 109.00		
Z-A1	6.90	216 41 20	Z	-24 685.67	+56 572.52	Z1-A	54.38	198 09 50	Z1	-24 592.77	+56 077.13		

AREA OF MAIN FIGURE : 10,9765 Ha.

S.G.No. 3191/2006
SHEET No. 1 OF 2
Approved:
for Surveyor General
Date:
Act 67 of 1995
DFA No. 2005/1173



GENERAL PLAN

(consisting of 2 Sheets) of

ROYAL PALM PHASE ESTATES

COMPRISING 94 ERVEN NUMBERED 166, 184 - 238, 240 - 263, 265 - 274 AND ROADS NUMBERED 458 - 461

SITUATE ON

ERF 2 ROYAL PALM ESTATES

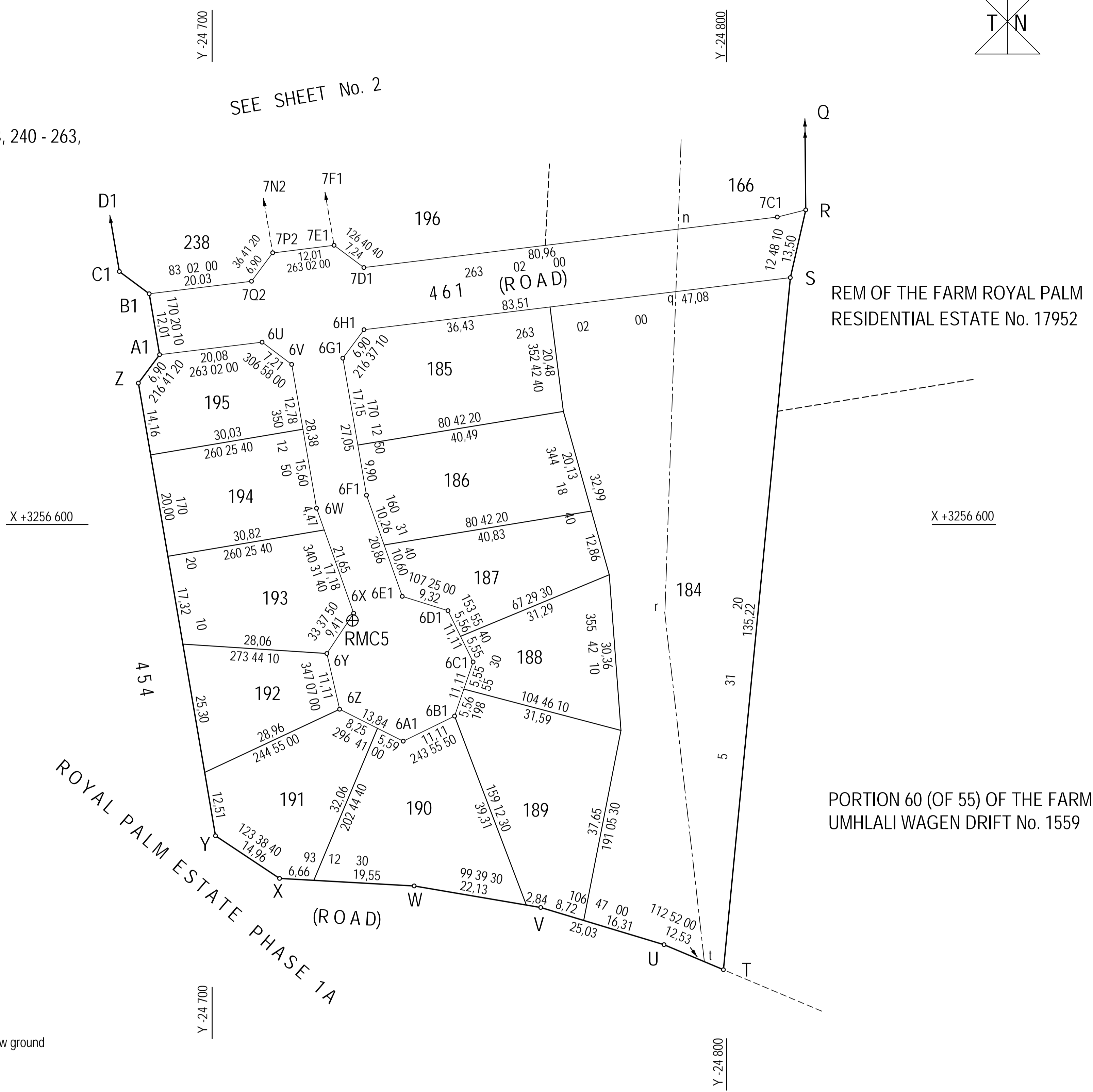
VIDE DIAGRAM S.G.No. 3190/2006

KWADUKUZA MUNICIPALITY

REGISTRATION DIVISION FU

PROVINCE OF KWAZULU-NATAL.

SCALE 1: 500

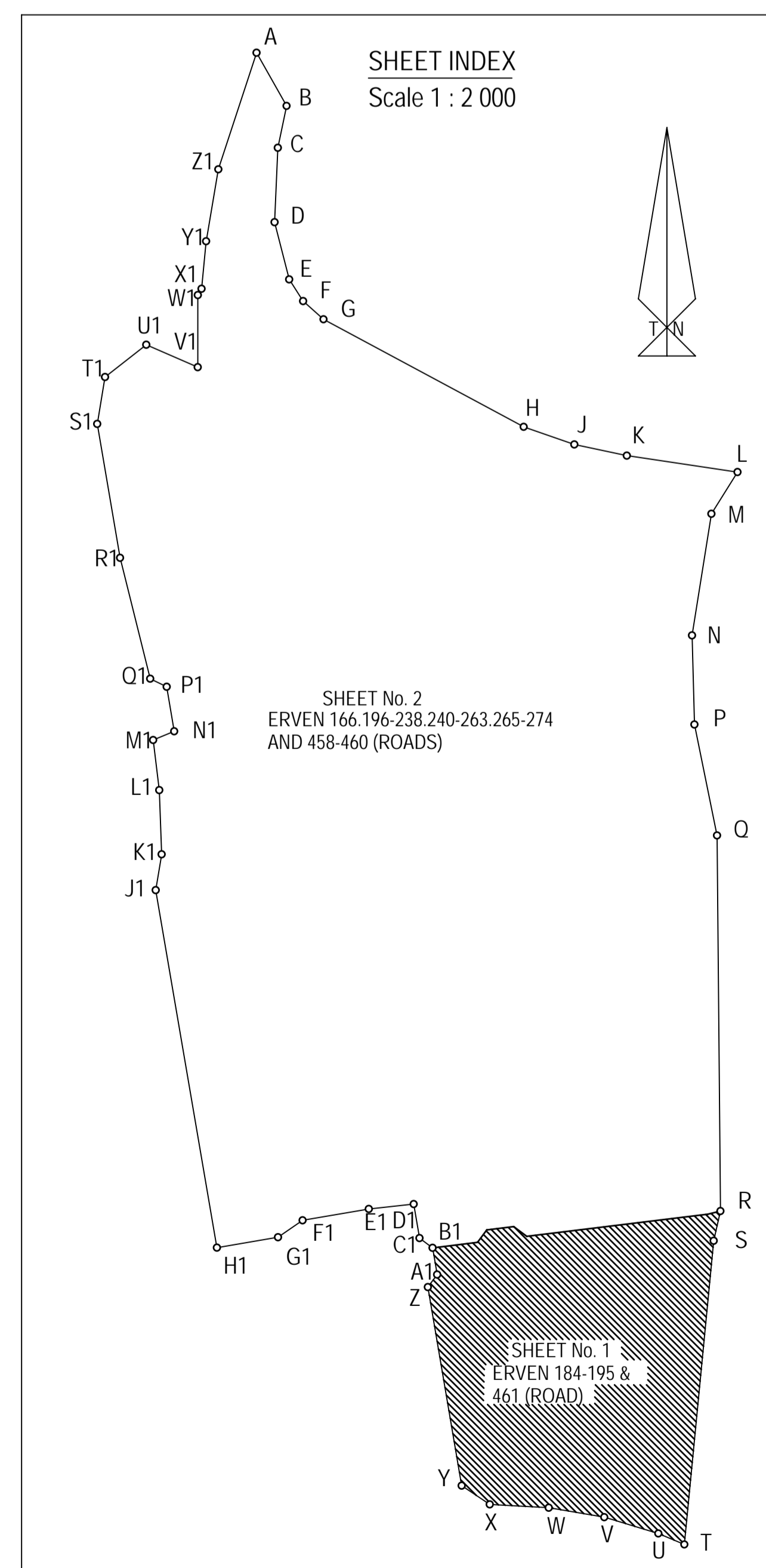


BEACON DESCRIPTIONS

- Main Figure**
All Main Figure beacons are 12mm iron pegs
- Block Corners**
All block corners are 12mm iron pegs
- Placed**
All placed beacons are 12mm iron pegs
- Reference Marks**
RMC1, RMC2, RMC3, RMC4, RMC5 20mm iron peg in concrete 0,2m below ground

AREAS		AREAS	
ERF NUMBERS	SQUARE METRES	ERF NUMBERS	SQUARE METRES
166	1,8412 ha.	231	600
184	4 067	232	600
185	860	233	600
186	822	234	600
187	631	235	600
188	594	236	600
189	877	237	600
190	884	238	604
191	672	240	596
192	503	241	596
193	668	242	597
194	603	243	597
195	530	244	597
196	710	245	598
197	612	246	598
198	683	247	599
199	493	248	599
200	605	249	599
201	602	250	599
202	588	251	653
203	590	252	701
204	627	253	513
205	607	254	527
206	575	255	601
207	694	256	643
208	724	257	672
209	611	258	601
210	707	259	602
211	636	260	674
212	640	261	653
213	788	262	1 081
214	786	263	610
215	599	265	792
216	563	266	589
217	944	267	550
218	873	268	550
219	1 184	269	550
220	834	270	550
221	922	271	550
222	827	272	550
223	655	273	550
224	600	274	571
225	601	458 (ROAD)	1,7891 ha
226	600	459 (ROAD)	6 331
227	600	460 (ROAD)	3 095
228	600	461 (ROAD)	2 733
229	600		
230	600		

System WG31* CO-ORDINATES (metres)			System WG31* CO-ORDINATES (metres)		
CONSTANTS	Y	X	CONSTANTS	Y	X
0.00	+ 3 200 000.00		0.00	+ 3 200 000.00	
BLOCK CORNERS					
6U	-24 709.73	+56 564.55	7Y1	-24 691.51	+56 356.63
6V	-24 715.49	+56 568.88	7Z1	-24 682.21	+56 301.96
6W	-24 720.31	+56 596.85	7A2	-24 685.48	+56 297.34
6X	-24 727.53	+56 617.26	7B2	-24 733.33	+56 289.18
6Y	-24 722.32	+56 625.10	7C2	-24 731.65	+56 279.33
6Z	-24 724.80	+56 635.93	7D2	-24 683.80	+56 287.49
6A1	-24 737.16	+56 642.15	7E2	-24 679.18	+56 284.22
6B1	-24 747.15	+56 637.26	7F2	-24 672.30	+56 243.78
6C1	-24 750.75	+56 626.75	7G2	-24 678.92	+56 239.14
6D1	-24 745.87	+56 616.77	7H2	-24 680.58	+56 227.94
6E1	-24 736.97	+56 613.98	7J2	-24 674.26	+56 219.43
6F1	-24 730.02	+56 594.31	7K2	-24 663.36	+56 217.81
6G1	-24 725.42	+56 567.66	7L2	-24 654.84	+56 224.13
6H1	-24 729.54	+56 562.13	7M2	-24 653.10	+56 235.88
7A	-24 623.77	+56 182.60	7N2	-24 660.36	+56 245.14
7B	-24 734.70	+56 218.39	7P2	-24 711.79	+56 547.17
7C1	-24 809.88	+56 540.22	7Q2	-24 707.67	+56 552.71
7D1	-24 729.52	+56 550.04	7T2	-24 619.85	+56 185.99
7E1	-24 723.71	+56 545.72	8A	-24 584.23	+56 171.58
7F1	-24 717.88	+56 511.48	8B	-24 590.90	+56 182.96
7G1	-24 721.16	+56 506.86	8C	-24 599.84	+56 187.63
7H1	-24 761.75	+56 499.94	8D	-24 601.89	+56 199.66
7J1	-24 760.07	+56 490.08	8E	-24 572.22	+56 204.67
7K1	-24 719.48	+56 497.00	8F	-24 568.17	+56 207.88
7L1	-24 714.86	+56 493.73	8G	-24 573.06	+56 209.60
7M1	-24 706.17	+56 442.71	8H	-24 602.73	+56 204.59
7N1	-24 709.44	+56 438.09	8J	-24 609.45	+56 244.03
7P1	-24 755.86	+56 430.18	8K	-24 579.81	+56 249.02
7Q1	-24 754.18	+56 420.32	8L	-24 575.92	+56 252.21
7R1	-24 707.77	+56 428.24	8M	-24 580.66	+56 253.95
7S1	-24 703.15	+56 424.56	8N	-24 610.29	+56 248.96
7T1	-24 694.54	+56 374.37	8T	-24 589.77	+56 307.18
7U1	-24 697.81	+56 369.76	8U	-24 585.15	+56 303.90
7V1	-24 746.42	+56 361.47	8V	-24 580.63	+56 324.94
7W1	-24 744.74	+56 351.61	REFERENCE MARKS		
7X1	-24 696.13	+56 359.90	RMC1	-24 622.07	+56 049.09
			RMC2	-24 570.65	+56 307.05
			RMC3	-24 678.88	+56 238.53
			RMC4	-24 753.66	+56 420.70
			RMC5	-24 727.30	+56 618.67
			TRIG BEACONS		
			A 84/2931	-22 622.67	+59 748.67
			A 85/2931	-26 782.49	+56 111.83



SURVEYED BY ME
DATE: November 2005 - October 2006, January 2007

FILE No. M.F.
SURVEY RECORDS : 1095/2006
COMPILATION : FUNW-1